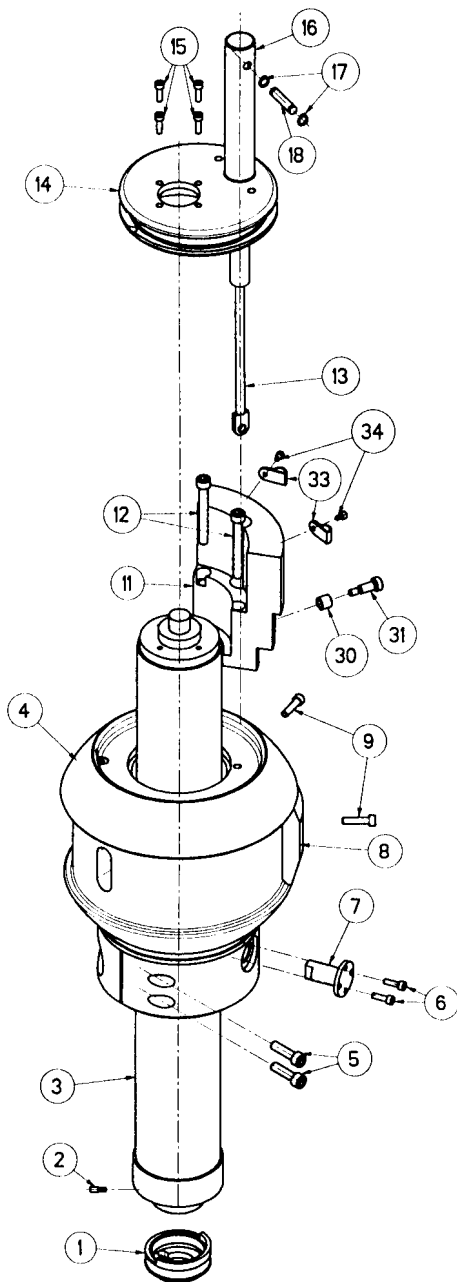


PRODUIT: **MILLENIUM 3.0**  
PRODUCT:

OBJET: **MONTAGE DU RESSORT A GAZ**  
SUBJECT: **GAS DAMPER MOUNTING**

The gas dampers must be assembled on the heads of SERDI MILLENIUM 3.0 with their thin part orientated **downwards**. This allows the tightness seal to be correctly lubricated. If the gas damper is mounted in the wrong direction, the tightness seal dries and the gas damper loses its initial pressure. This point has to be checked on every Millenium 3.0 from number **110** up to number **190**.



#### OPERATING MODE

- ✎ Raise the spindle to the maximum height with the wheel and lock it by tightening screws rep. **5**.
- ✎ Remove clips rep. **17** and axis rep. **18**. Remove the four screws rep. **15** and disassemble assembly **14-16** from the spindle.
- ✎ Unscrew screws rep. **12** and remove counterweight rep. **11** fitted with gas damper rep. **13**.
- ✎ Remove screw rep. **31** and spacer rep. **30**. Put the gas damper in the right direction and refit it on the counterweight. The order of mounting is: spacer - gas damper - screw. The thin part of the gas damper must be downwards. Lock screw rep. **31**.
- ✎ Reassemble the counterweight fitted with the gas damper on the sphere rep. **4**. Push the counterweight towards outside before locking screws rep. **12**, so that it won't come in contact with the depth control device when the spindle moves up or down.
- ✎ Fit the assembly **14-16** back on the spindle and lock screws rep. **15**. Fit the axis rep. **18** back through the upper hole of the spindle damper and fit clips rep. **17**.
- ✎ Unscrew screws rep. **5**, move the spindle up and down. Adjust tightening of screws rep. **5** so that the movement should be smooth, but the spindle must not move upwards by itself when the wheel is free.