

30 July 98

PRODUCT: SERDI 2**TOPIC: REPLACEMENT OF THE VALVE DRIVE ASSEMBLY**

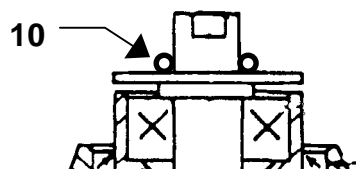
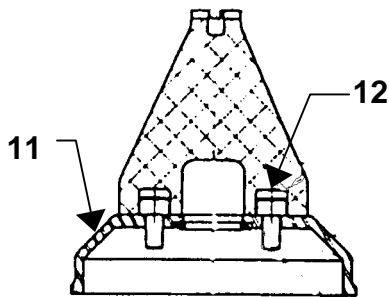
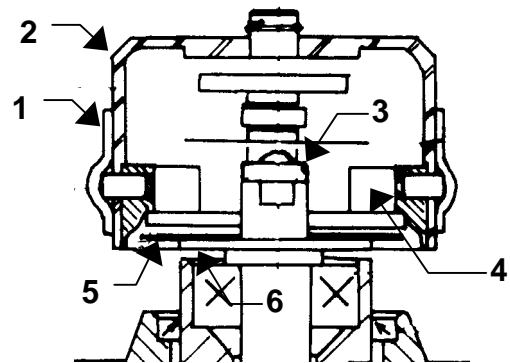
On the latest generation **SERDI 2** (serial number **450** and higher) SERDI is now supplying a new valve drive assembly using a polyurethane pad.

The new assembly is very simple and reliable and can easily be adapted to earlier machines.

As a replacement to the mechanical drive cup or its thrust bearing, SERDI will now supply a kit containing a new drive cup and a set of 5 polyurethane drive pads.

REPLACEMENT PROCEDURE

- ✗ Remove rubber band **1**.
- ✗ Remove the drive cup **2**.
- ✗ Remove the thrust bearing **3**.
- ✗ Remove the lower drive **4** which is attached with two countersunk Allen bolts.
- ✗ Remove the three cross shaped springs **5** and the teflon washer **6**.



Fit the O-ring **10**.

Bolt down the drive cup **11** with the two Allen **12** bolts supplied.

Polyurethane pads fit directly over the drive cup and are available in a range of 5 diameters:

- Reference **015513**: diameter **12 mm (.47")**
- Reference **015514**: diameter **20 mm (.79")**
- Reference **015515**: diameter **29 mm (1.14")**
- Reference **015516**: diameter **42 mm (1.65")**
- Reference **015517**: diameter **66 mm (2.6")**

New drive cup, ref. # **015552**

Set of 5 polyurethane pads, ref. # **016063**.